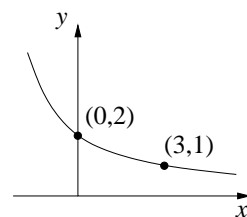
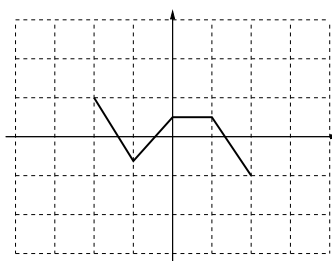
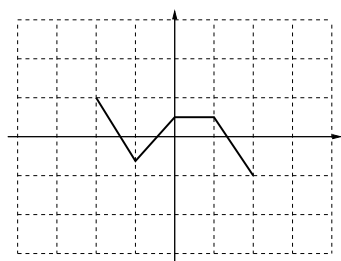


1. Find a possible formula for an exponential function that could give the graph to the right.



2. On the figures below, which show a function $f(x)$, sketch on the left $\frac{1}{2} f(x+2)$ and on the right $f(-x)$. Assume that the grid lines are spaced by units of 1 in both directions.



3. For $g(z) = 3z^2 - 2z$ and $p(z) = z + h$, find $g(p(z))$.

4. Let $f(t) = P_0 e^{kt}$. If $f(1) = 1$ and $f(3) = 2$, find an explicit formula for $f(t)$.