

MATH 116 — PRACTICE FOR EXAM 1

Generated September 12, 2018

NAME: _____

INSTRUCTOR: _____ SECTION NUMBER: _____

1. This exam has 4 questions. Note that the problems are not of equal difficulty, so you may want to skip over and return to a problem on which you are stuck.
2. Do not separate the pages of the exam. If any pages do become separated, write your name on them and point them out to your instructor when you hand in the exam.
3. Please read the instructions for each individual exercise carefully. One of the skills being tested on this exam is your ability to interpret questions, so instructors will not answer questions about exam problems during the exam.
4. Show an appropriate amount of work (including appropriate explanation) for each exercise so that the graders can see not only the answer but also how you obtained it. Include units in your answers where appropriate.
5. You may use any calculator except a TI-92 (or other calculator with a full alphanumeric keypad). However, you must show work for any calculation which we have learned how to do in this course. You are also allowed two sides of a $3'' \times 5''$ note card.
6. If you use graphs or tables to obtain an answer, be certain to include an explanation and sketch of the graph, and to write out the entries of the table that you use.
7. You must use the methods learned in this course to solve all problems.

Semester	Exam	Problem	Name	Points	Score
Winter 2015	1	3		13	
Fall 2013	1	8		10	
Winter 2012	1	5		12	
Fall 2016	1	1		13	
Total				48	

Recommended time (based on points): 43 minutes

3. [13 points] Use the table and the fact that

$$\int_0^{10} f(t)dt = 350$$

to evaluate the definite integrals below exactly (i.e., no decimal approximations). Assume $f'(t)$ is continuous and does not change sign between any consecutive t -values in the table.

t	0	10	20	30	40	50	60
$f(t)$	0	70	e^5	e^3	0	$\pi/2$	π

a. [4 points] $\int_0^{10} t f'(t) dt$

b. [4 points] $\int_{20}^{30} \frac{f'(t)}{f(t)} dt$

c. [5 points] $\int_{50}^{60} f(t) f'(t) \sin(f(t)) dt$

8. [10 points] Let $g(x)$ be an odd continuous function and $h(x)$ an antiderivative of $g(x)$. Find the values of the following expressions given the values of the functions below.

x	0	1	2	3	4
$g(x)$	0	5	1	-2	-1
$h(x)$	2	6	10	8	5

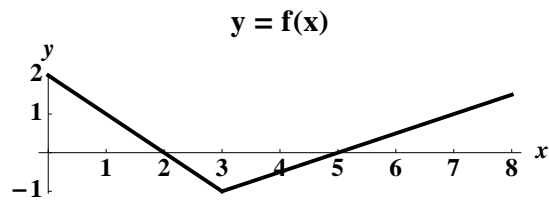
Show all your work to receive full credit.

a. [3 points] $\int_{-1}^2 (3g(t) - 5)dt$

b. [4 points] $\int_1^3 tg'(t)dt$

c. [3 points] Let $F(x) = \int_3^{4x} h(t)dt$. Find $F'(1)$.

5. [12 points] The graph of $f(x)$ and a table of values for the continuous functions $g(x)$ and $h(x)$ are given below. The function $h(x)$ is an antiderivative of $g(x)$.



x	0	1	2	3	4
$g(x)$	1	3	5	7	9
$h(x)$	-3	-1	3	9	17

Compute the **exact** value of each of the following expressions:

a. [1 point] $\int_0^7 |f(x)| dx$

b. [4 points] $\int_1^{e^2} \frac{f(\ln x)}{x} dx$

c. [7 points] Find $\int_1^2 xg'(2x) dx$

1. [13 points] Suppose that f is a twice-differentiable, function that satisfies

$$f(0) = 1 \qquad f(2) = 2 \qquad f(4) = 4 \qquad f'(2) = 3$$

$$\int_0^2 f(x) dx = 5 \qquad \int_2^4 f(x) dx = 7.$$

Evaluate the following integrals.

a. [4 points] $\int_0^2 x f'(x) dx$

b. [4 points] $\int_{\sqrt{2}}^2 x f'(x^2) dx$

c. [5 points] $\int_0^2 x^3 f'(x^2) dx$